



 **EESTI RAUDTEE**
estonian railways

2018



ESTONIAN RAILWAYS



КАРТА БАЛТИЙСКОЙ ЖЕЛЕЗНОЙ ДОРОГИ

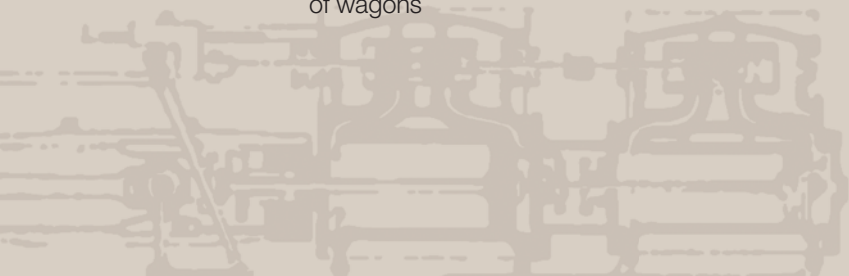
И В Ъ



Длина Широты 30° 30' 00" Длина Долготы 30° 30' 00"



- Estonian Railways – largest railway company in Estonia operating since 1870
- Free capacity both on railways and in the ports
- Infrastructure in a very good condition
- 1500 metre station yards at border and intermediate stations that provide proper conditions for servicing heavy and long freight trains
- Quality and reliable traffic management ensuring fast circulation of wagons

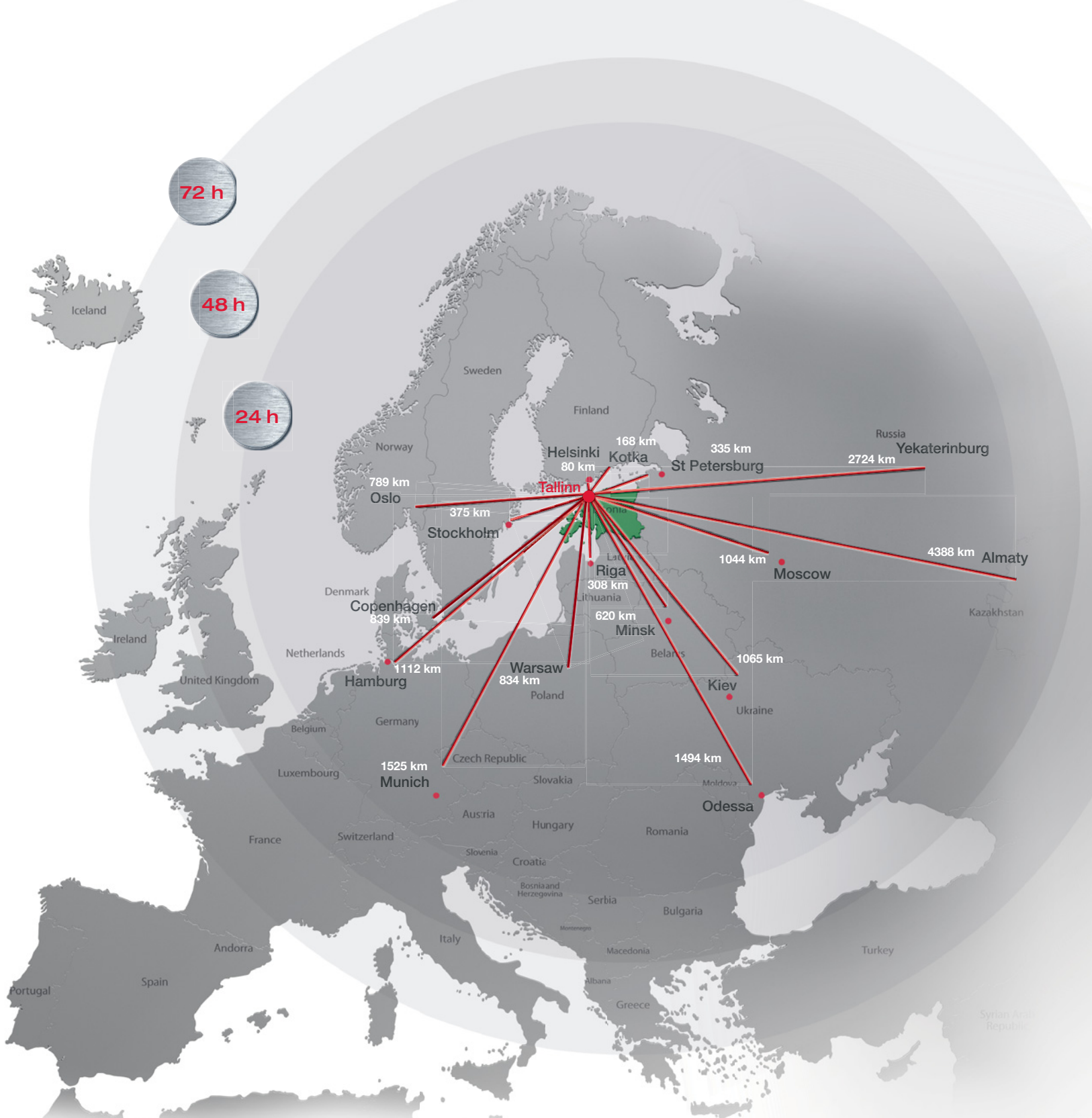


ESTONIA

Estonia is a dynamic and flexible country with open economic policies where ancient history and high-technology, Eastern hospitality and Northern innovativeness can be found side by side.

- Geographical location that enables fast access to all important regional centres
- Liberal economic environment
- Free competition
- No restrictions on foreign capital
- Establishment of a company takes only a few minutes
- Uncomplicated and transparent taxation system
- Corporate income tax 0%
- Conservative budget policy
- Estonia is an EU member-state and its official currency is the Euro







**INFRA-
STRUCTURE**





Track gauge	1520/1524 mm
Overall length of railways	1219 km
Including double-track railways	94 km
Number of switches	1190 pcs
Length of electrified railways	132 km
Number of passenger platforms	129 in use
Number of stations	61
Number of border stations	3
Capacity	56 train pairs per 24 hours



BORDER STATIONS

with Russia

Narva – Ivangorod • Koidula – Pechori

with Latvia

Valga – Valka

Total capacity within 24 hours 56 train pairs

Both border stations and call stations have 1500 metre station rails, providing good conditions for processing even very heavy and long freight trains.

Border station

Trains accepted

Valga

5200 tonnes or 57 standard units

Koidula

5200 tonnes or 57 standard units
On special agreement up to 6000 tonnes or 69 units

Narva

5600 tonnes or 57 standard units
On special agreement up to 7000 tonnes or 71 units





*Capacity of the station within 24 hrs.

120/80 km/h





FREIGHT TRAFFIC

In 2017, the infrastructure of Estonian Railways Ltd passed through 12.41 million tonnes of cargo, 7.59 million tonnes of which came from transit, 0.26 tonnes from export and 1.31 million tonnes from import. Local freights were made in the volume of 3.24 million tonnes. The volume of container transport was 33 700 TEUs.

Largest share was formed by fertilizers in the volume of 4.41 million tonnes. The volume of oil and oil products was 2.94 tonnes and oil shale 2.36 million tonnes.



In 2017, railway infrastructure capacity was allocated to 134 electric passenger train lines and 113 diesel passenger train lines.

There were 7.44 million travellers carried nationally and 105.3 thousand with the international Tallinn-St. Petersburg-Moscow line.

PASSANGER TRAFFIC



PORTS

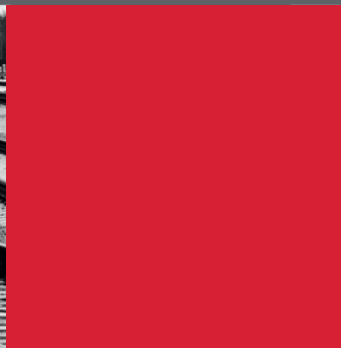


Estonian railway connections allow delivering cargo to seven ports, largest of which is the Muuga Harbour belonging to the Port of Tallinn.

Estonian ports:

- are practically ice-free
- include space for new developments.
- are well connected both by railway and highway
- allow handling vessels up to 300 000 DWT
- are sufficient depths of the quaysides for servicing the largest vessels that can enter the Baltic Sea through the Danish Straights





AT GLANCE

In 2017 12.41 million tonnes of cargo was transported on the infrastructure of Estonian Railways, 7.59 million tonnes of which came from transit.

In the course of 2017 in the national passenger trains 7.44 million passengers and international connections 105.3 thousand passengers travelled at the Estonian Railways' infrastructure.

Annual turnover of the company reached 33 million euros in 2017.

Estonian Railways Ltd employs 791 employees.

Performance results	2015	2016	2017
Freight transport turnover million net-ton-kilometres	2867	1873	1819
Average carriage distance, km	186	150	147
Volume of local traffic, million tons	2.5	2.9	3.2
Volume of international traffic, million tons	12.9	9.6	9.2
Financial results			
Sales revenue, million euros	43.9	33	33
Net profit, million euros	-6.3	-10.8	-7.6
Investments, million euros	13.1	15.4	14
Equity capital, million euros	161.1	149.1	141.5
Total assets, million euros	302.7	301.4	304.2
EBITDA, million euros	13.8	9.8	11.9



AS Eesti Raudtee
Toompuiestee 35
15073 Tallinn, Estonia
phone +372 615 8610
fax +372 615 8710
e-mail raudtee@evr.ee
www.evr.ee